

# Doubles Facts & Function Tables

1.	$n + n = 8$	$n = \underline{\hspace{2cm}}$	$\underline{\hspace{2cm}} + \underline{\hspace{2cm}} = 8$
2.	$y + y = 18$	$y = \underline{\hspace{2cm}}$	$\underline{\hspace{2cm}} + \underline{\hspace{2cm}} = 18$
3.	$b + b = 10$	$b = \underline{\hspace{2cm}}$	$\underline{\hspace{2cm}} + \underline{\hspace{2cm}} = 10$
4.	$a + a = 12$	$a = \underline{\hspace{2cm}}$	$\underline{\hspace{2cm}} + \underline{\hspace{2cm}} = 12$
5.	$c + c = 16$	$c = \underline{\hspace{2cm}}$	$\underline{\hspace{2cm}} + \underline{\hspace{2cm}} = 16$
6.	$z + z = 14$	$z = \underline{\hspace{2cm}}$	$\underline{\hspace{2cm}} + \underline{\hspace{2cm}} = 14$

Table 1 **Rule:** \_\_\_\_\_

$a$	$b$
2	5
3	6
5	8
6	

Table 2 **Rule:** \_\_\_\_\_

$m$	$n$
1	3
2	4
3	5
7	

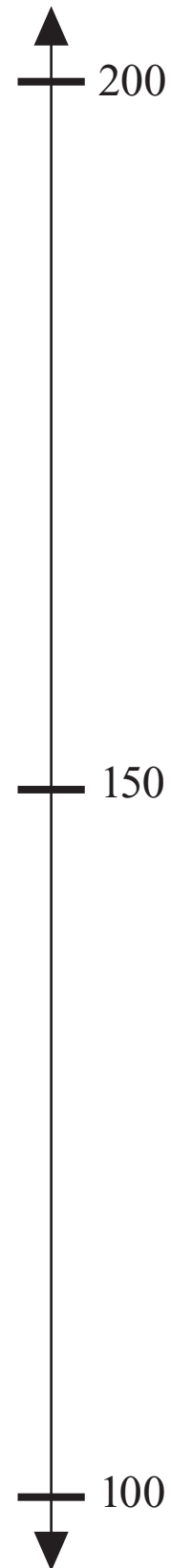
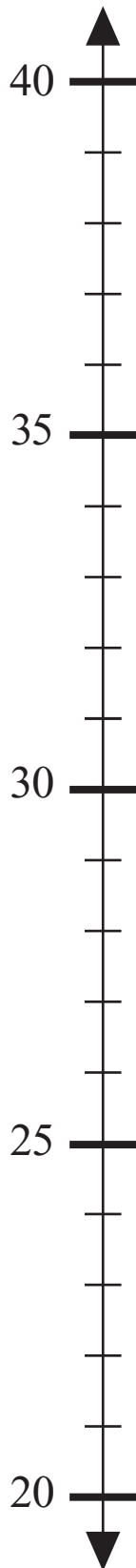
Table 3 **Rule:** \_\_\_\_\_

$y$	$z$
2	7
4	9
5	10
6	

Table 4 **Rule:** \_\_\_\_\_

$c$	$d$
5	1
7	3
8	4
9	

# Vertical Number Lines



# Menu

Lunch Menu			
Candy Bar	\$0.69	Hamburger	\$2.59
Soda	\$0.99	Milk Shake	\$2.25
Hot Dog	\$2.29	Ice Cream	\$0.89
Fries	\$1.29		
<b>Meals</b>	#1 Hot dog, fries, and soda		\$4.49
	#2 Hamburger, fries, and soda		\$4.69
<b>Special Meal Offer!</b>	3 burgers, 3 fries, and 3 sodas		\$12.95

	Estimate	Cost
1. Fries and soda		
2. Hamburger, fries, and ice cream		
3. Two ice creams		
4. Ice cream and milk shake		

5. Captain Bailey has \$5.00. He wants to buy Meal #2 and an ice cream. Does he have enough money?
6. Captain Bailey is buying lunch for Ernesto, Clipper, and himself. They are going to share a Special Meal Offer and a Meal #1. How much will Captain Bailey pay for lunch?

## Word Problems

1. Great white sharks migrate between California and Hawaii, a distance of about 2,560 miles. It is estimated that some salmon travel 40,000 miles across several oceans, rivers, and streams. How much farther do some salmon travel than great white sharks?

2. Two killer whales were seen off the coast of Alaska. One whale weighed 5,326 kg, and the other weighed 4,975 kg. How much did they weigh altogether?

3. An ocean exploration vessel sank and rested on the ocean floor 30,500 feet below the surface of the water. Mount Everest is 29,017 feet high. How much deeper is the ocean floor where the exploration vessel rested than the height of Mount Everest?

4. A bluefin tuna weighing 1,500 lb is worth about \$20,000. Captain Bailey caught a smaller bluefin that was worth \$17,529. How much more is the 1,500 lb bluefin worth than the one that Captain Bailey caught?

# Money Word Problems

## Lunch Menu



Candy Bar  
\$ 0.69



Hamburger  
\$2.59

**Special Meal Offer!**  
3 burgers, 3 fries, and  
3 sodas \$12.95



Soda  
\$0.99



Milk Shake  
\$2.25



Hot Dog  
\$2.29



Ice-Cream Cone  
\$0.89



Fries  
\$1.29

1. Captain Bailey bought a hamburger. He gave the cashier \$5.00. How much change did Captain Bailey receive?
2. How much more does a milk shake cost than an ice-cream cone?
3. Ernesto bought a hot dog, fries, and a soda. How much money did he spend?
4. Mendoza bought a special meal offer for his crew. He also bought a milk shake for himself. He paid with a twenty-dollar bill. How much change did he receive?

## ***Types of Subtraction***

---

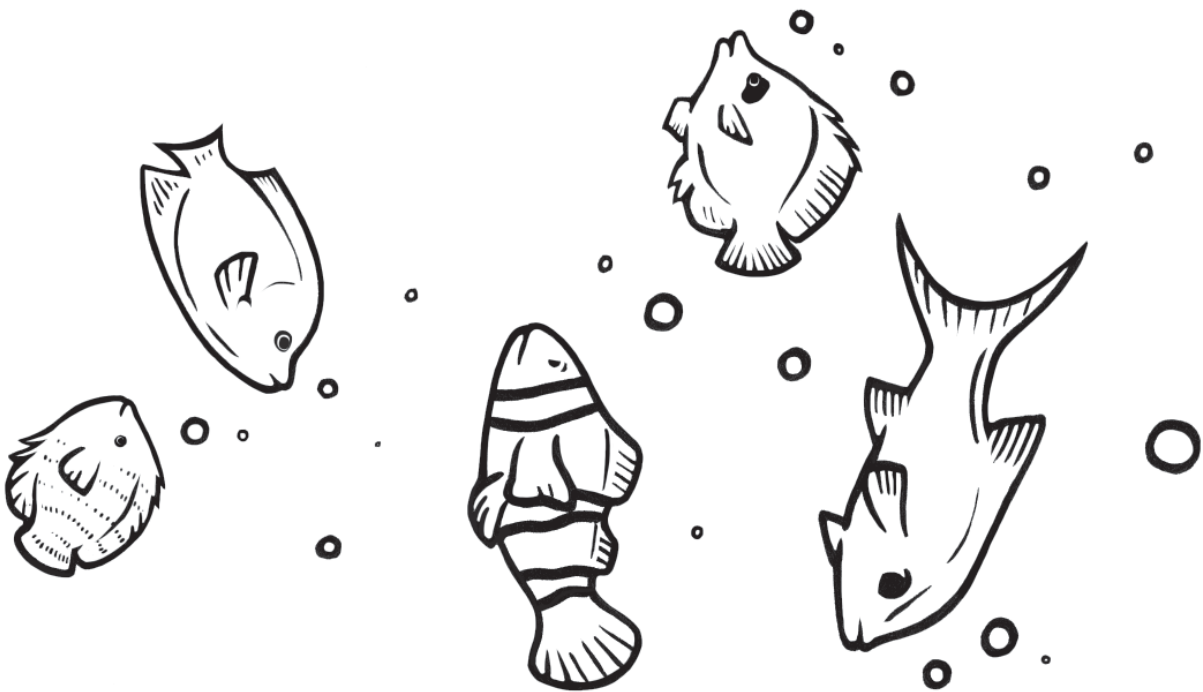
1. There were 7 fourth-grade students playing soccer during recess. When 3 of the students stopped playing and ran to the slide, how many students were left to play soccer?
2. Jill has 7 books, and Tina has 3 books. How many more books does Jill have than Tina?
3. Mr. Jacobs needs 7 students to stay after school to help clean the desks. Three students have volunteered to remain. How many more students does Mr. Jacobs need?
4. There are 7 students in the green reading group. If 3 of the students are girls, how many boys are in the green group?

## Subtraction Word Problems

---

1. Stephen earned \$15.00 mowing lawns. He spent \$12.95 on a new book. How much money does he have left?
2. The Blair family needs to drive 325 miles to get home. They have driven 243 miles. How many more miles do they need to go?
3. Karen read 321 pages for the summer library reading competition. Jessica read 478 pages. How many more pages has Jessica read than Karen?
4. Molly has 25 mini candy bars. She gave 19 of them to her classmates. How many mini candy bars does she have left?
5. Jordan has a total of 325 sports cards. He has 133 football cards. The rest are baseball cards. How many baseball cards does he have?

# Saltwater Fish



Stock your aquarium at the *Fish Factory!*

## Estimated Cost

Blue Chromis	\$24.95	_____
Barrier Clown	\$30.00	_____
Shortfin Lionfish	\$53.95	_____
Golden Butterfly	\$61.45	_____
Highfin Snapper	\$70.95	_____
Blueface Angel	\$119.45	_____
Golden Angel	\$133.95	_____
Total estimated cost	_____	_____

## Word Problems with Variables

---

1. Captain Bailey took his nephew Jason and Jason's friend Michael on a week-long vacation on his boat. During the week, they spent time fishing. Michael caught 12 more fish than Captain Bailey. Captain Bailey caught 37 fish, which was 14 more than Jason caught. How many fish did each person catch?

$$\text{Captain Bailey} = c \qquad c = 37 \text{ fish}$$

$$\begin{aligned} \text{Michael} = m \qquad m &= c + 12 \\ m &= 37 + 12 \\ m &= 49 \text{ fish} \end{aligned}$$

$$\begin{aligned} \text{Jason} = j \qquad j &= c - 14 \\ j &= 37 - 14 \\ j &= 23 \text{ fish} \end{aligned}$$

## Word Problems with Variables

---

2. Jason's heaviest fish weighed 55 pounds. Michael's heaviest fish weighed 20 pounds less than Jason's. Captain Bailey's heaviest fish weighed 13 pounds more than Michael's. How much did Captain Bailey's fish weigh?

$$\text{Jason} = j$$

$$j = 55 \text{ pounds}$$

$$\text{Michael} = m$$

$$m = j - 20$$

$$m = 55 - 20$$

$$m = 35 \text{ pounds}$$

$$\text{Captain Bailey} = c$$

$$c = m + 13$$

$$c = 35 + 13$$

$$c = 48 \text{ pounds}$$